

# Vocabularies for Access to History and New Knowledge: Focus on the Getty Vocabularies

Patricia Harpring  
Managing Editor  
Getty Vocabulary Program  
Getty Research Institute

EuroMed 2020  
2 November 2020

Getty

## Find the Getty Vocab Online

- For information about the Getty vocabularies, see this site
- Search the data, access data releases, how to contribute, editorial guidelines, training materials, news
- Contact us: [vocab@getty.edu](mailto:vocab@getty.edu)

**Getty**

## The Getty Research Institute

Exhibitions & Events
Special Collections
Library
Search Tools & Databases
Scholars & Projects
Publications
About the GRI

Print
Share

Search Tools & Databases

- Primo Search
- Getty Research Portal
- Collection Inventories & Finding Aids
- Photo Archive
- Research Guides & Bibliographies
- Digital Collections
- Article & Research Databases
- Collecting & Provenance Research
- BHA & RILA
- ▼ **Getty Vocabularies**
  - ▶ Art & Architecture Thesaurus (AAT)®
  - ▶ Cultural Objects Name Authority (CONA)®
  - ▶ Getty Thesaurus of Geographic Names (TGN)®
  - ▶ Union List of Artist Names (ULAN)®
  - ▶ Contribute
  - ▶ Editorial Guidelines
  - ▶ Getty Vocabularies as Linked Open Data
  - ▶ Frequently Asked Questions
  - ▶ Obtain the Getty Vocabularies
  - ▶ Training Materials

### Getty Vocabularies

**NEW**

The Getty vocabularies are now available as Linked Open Data. [Learn more.](#)

*What is cinnabar? What is a rhyton?* The Getty vocabularies contain structured terminology for art, architecture, decorative arts, archival materials, visual surrogates, conservation, and bibliographic materials. Compliant with international standards, they provide authoritative information for catalogers, researchers, and data providers. The vocabularies grow through contributions. In the new linked, open environments, they provide a powerful conduit for research and discovery for digital art history. To search the vocabularies, click on the links below.

**The Art & Architecture Thesaurus (AAT)®**

*Catherine wheel or rose window?* AAT is a structured vocabulary, including terms, descriptions, and other metadata for generic concepts related to art, architecture, conservation, archaeology, and other cultural heritage. Included are work types, styles, materials, techniques, and others.

**The Getty Thesaurus of Geographic Names (TGN)®**

*Thebes or Diospolis?* TGN is a structured vocabulary, including names, descriptions, and other metadata for extant and historical cities, empires, archaeological sites, and physical features important to research of art and architecture. TGN may be linked to GIS, maps, and other geographic resources.

**The Cultural Objects Name Authority (CONA)®**

*Mona Lisa or La Gioconda?* CONA compiles titles, attributions, depicted subjects, and other metadata about works of art,

**The Union List of Artist Names (ULAN)®**

*Titian or Tiziano Vecellio?* ULAN is a structured vocabulary, including names, biographies,

**Linked Open data**  
GETTY VOCABULARIES

**See What's New**

- Multilingual & multi-cultural  
AAT: Conservation terms;  
Dutch: 60,600; Spanish:  
55,000; Chinese: 26,000;  
German: 20,500

**Have a Question?**

- ✉ Contact the Vocabulary Program
- 📧 [Subscribe to GRI News](#)

EuroMed 2020: Getty Vocabularies

<http://www.getty.edu/research/tools/vocabularies/index.html>

# The Way We Were Finding information by hand

My box of research materials for one project, many years ago



## Discovery, Knowledge Creation, and Dissemination of research and art information: pillars of GRI mission

- How did art historians do research in the past?
- By hand, physical resources and card catalogs, bibliographic indexes such as BHA (Bibliography for the History of Art)
- Printing out, photocopying, taking photos, note taking
- Traveling around the world, many months to find all data
- Needed better methods and tools for research and discovery
- Solutions would also address needs of repositories, other cataloging institutions with mission to disseminate their data
- The Getty Vocabularies, CDWA, etc. were developed to allow consistency in cataloging and improvement of retrieval

**Goal = data linked to other data, discoverable –**  
 First = deal with human factor, links/consensus across different disciplines; repositories (archives, special collections, visual resources, museums, bibliographic, scholars); languages and cultures; current and historical



# Where We Are Now

A few decades have passed ...  
Using Linked Open Data

**Getty Vocabularies are LINK-able**

Data in standard formats that allow linking

- Now we can begin to find materials for research and discovery online
- Getty vocabularies have been used for indexing  
 Now = links are possible via LOD, links to TGN and AAT within ULAN are used
- 90 sample SPARQL queries, editable

*Find artists who worked in Italy and lived during a given time range but who are not Italian*

Select ULAN records

- Having event that took place in tgn:1000080 Italy or any of its descendants
- Birth date between 1250 and 1780
- Descendants of facet ulan:500000002 "Persons, Artists"
- Not having nationality aat:300111198 Italian or any of its descendants

**LINK**

Hier. Link in TGN

**LINK**

**LINK**

## ULAN

```

select ?x ?name ?bio ?birth {
  {select distinct ?x
   {?x
    foaf:focus/bio:event/(schema:location| (schema:location/gvp:broaderExtended)) tgn:1000080-place}}
  ?x gvp:prefLabelGVP/xl:literalForm ?name;
  foaf:focus/gvp:biographyPreferred [
    schema:description ?bio;
    gvp:estStart ?birth].
  filter ("1250"^^xsd:gYear <= ?birth && ?birth <= "1780"^^xsd:gYear)
  filter exists {?x gvp:broaderExtended ?facet.
  filter (?facet in (ulan:500000002, ulan:500000002))}
  filter not exists {
    ?x
    foaf:focus/(schema:nationality| (schema:nationality/gvp:broaderExtended)) aat:300111198}}
  
```

**– [still is in-process, as of now not enough works are discoverable]**

## Getty Vocabularies: Our History

- The Getty Vocabularies were established to meet the needs of art museum, visual resources, archives, and art library communities
- Authoritative vocabularies -- indexing and retrieval of art information, architecture, conservation, archaeology; but not authoritarian = flexibility to achieve buy-in
- Why standards and controlled vocabularies? To make data more consistent, more usable in-house, and in broader environments
- Better able to withstand changes in technology and practices over time
- Greatest investment in cataloging is the human investment, with experts analyzing and recording data -- preserve that investment via standards
- Sources of data? For Getty Vocabularies, core initial data was compiled from existing Getty projects' data and a few open data resources
- Vocabularies are compiled through contributions from qualified and trained contributors (visual resources collections, museums, art libraries, special coll., bibliographic indexing projects, international translation projects)
- Authoritative -- Contributors and published sources are cited
- Authoritative -- Persistent numeric identifiers for records, terms, and other data; co-referencing to other IDs for the same concept in other resources



Getty

Euromed 2020: Getty Vocabularies

## Getty Vocabularies: Our History

<https://www.getty.edu/research/tools/vocabularies/faq.html#1a>

- Getty was a trailblazer
  - a) committing resources to standards and vocabularies for art information, and
  - b) bringing together disparate communities under Getty leadership
- AAT (Toni Peterson), ULAN and TGN were begun 1980s-1990s (director, Eleanor Fink)
- Informed by CIHA TAU (Thesaurus Artis Universalis)
- CONA and IA based on CDWA
- Getty Vocabulary Program formerly part of the Art History Information Program



Partial group of AHIP staff at new Getty Center, 1997

Getty



## Getty Vocabularies: Our History

- We continue working with the international community
- E.g., ITWG (International Terminology Working Group), February 2020
- AAT translations, other contributions, implementations of Vocabs



## Getty Vocabularies: Based in Standards

### Standards for data content and structure

There are several types of controlled vocabularies and related specifications relevant for art and other cultural heritage information

- Subject heading lists
- Controlled lists
- Synonym ring lists
- Authority Files
- Taxonomies
- Alphanumeric classifications
- **Thesauri**      Getty Vocabularies are thesauri
- Ontologies
- Folksonomies



Euromed 2020: Getty Vocabularies

## Getty Vocabularies: Based in Standards



- Thesaurus: A semantic network of unique concepts
- Thesauri may be monolingual or multilingual
- Thesauri may have the following three relationships:
  - Equivalence Relationships
  - Hierarchical Relationships
  - Associative Relationships



stirrup cups  
coaching glasses  
hunting glasses

*associative*



sturzbechers  
Sturzbecher  
stortebekers

*hierarchical*  
Objects Facet  
.... Furnishings and Equipment  
..... Containers  
..... <culinary containers>  
..... <vessels for serving /  
..... <consuming food>

*equivalence*

rhyta  
rhyton  
rhytons  
rhea  
rheon  
rheons  
ritón  
ῥυτόν  
rhütón  
莱坦酒杯

distinguished  
from

Getty

## Getty Vocabularies: Based in Standards

- Compliant with national (NISO) and international (ISO) standards for thesaurus construction: ISO 25964-1:2011; ISO 25964-2:2013; ANSI/NISO Z39.19-2005,
- Getty Vocabularies are compliant with / map to other standards:
  - CDWA (Categories for the Description of Works of Art)
  - CCO (Cataloging Cultural Objects)
  - VRA Core (Visual Resources Association core categories)
  - LIDO (Lightweight Information Describing Objects)
  - CIDOC CRM (CIDOC Conceptual Reference Model) (ISO 21127:2014)
- Editorial rules based on common practice, reflect best practice

### Metadata Standards Crosswalk [https://www.getty.edu/research/publications/electronic\\_publications/intrometadata/crosswalks.html](https://www.getty.edu/research/publications/electronic_publications/intrometadata/crosswalks.html)

| CDWA                                | CCO       | CONA   | CIDOC CRM<br>[coming soon] | LIDO<br>[coming soon] | CDWA Lite                   | VRA Core  | MARC/AACR [RDF coming soon]                       | MOD                 |
|-------------------------------------|-----------|--|----------------------------|-----------------------|-----------------------------|---|---|---------------------|
| <b>1. OBJECT/ WORK (core)</b>       |           |  |                            |                       |                             |   |   |                     |
| <b>1.1. Catalog Level (core)</b>    |           | Creator_Other_Displays.<br>catalog_level                   |                            |                       | <<cdwalite: recordType>     | <vra: work> or <vra: collection>                    | 655 Genre/Form 300a Physical Description - Extent | <genre><br><extent> |
| <b>1.2. Object/Work Type (core)</b> | Work Type | PType_Role_Rel. subject_id and ptype_role_id [link to AAT] |                            |                       | <<cdwalite: objectWorkType> | <vra: worktype> in <vra: work> or <vra: collection> | 655 Genre - Form                                  | <genre>             |

## Getty Vocabularies: Based in Standards

### Standards for data releases

- Compiled, merged, edited, and published by the Getty; refreshed monthly
- **Open Data Commons Attribution License (ODC-By) v1.0**
- Allows sharing, creation, adaptation of data with attribution
- **Data is made available in various ways, use technical standards for releases**
  - online searching, <https://www.getty.edu/research/tools/vocabularies/index.html>
  - Web services APIs
  - Relational tables and XML format
  - Linked Open Data: structured and published to make it openly accessible and shareable on the Semantic Web: **JSON, RDF, N3/Turtle, N-Triples** formats'
- Links to LOD and Sparql end point <https://www.getty.edu/research/tools/vocabularies/loj/index.html>

Getty

## Scope of Getty Vocabularies

The mission of the Getty Vocabulary Program (GVP) is to produce **rich, structured, authoritative vocabularies**, in compliance with **international standards**, that provide a powerful conduit for **inter-related, linked, and meaningful research, discovery, and understanding of the visual arts** and their various histories, in collaboration with the **international community**, and utilizing **training and outreach** to inform the field.

A primary goal of the Getty Vocabulary Program is to broaden and enrich the scope and coverage of the Getty Vocabularies to become ever more **multilingual, multicultural, inclusive, and representative of the subjects and priorities of the GRI, the Getty, and global art history.**

<https://www.getty.edu/research/tools/vocabularies/faq.html#1aa>

Euromed 2020: Getty Vocabularies



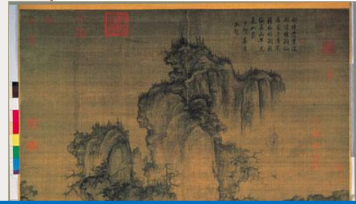
Getty

## How Getty Vocabularies are used Scope of Getty Vocabularies

**Catalog Level:** item **Classification:** paintings  
**Work Type:**  
 painting (visual work) [AAT 300033618]  
 scroll painting [AAT 300033666]

**Title:** Scene of Early Spring **Type:** repository **Lang:** English  
**Title:** 宋郭熙早春圖 軸 **Type:** repository **Lang:** AAT 300015012

**Creator Display:** Guo Xi, Song Dynasty  
**Index:** Guo Xi (Chinese painter, 1023 - ca. 1090) [ULAN 500125758]  
**Role:** artist  
**Creation Date:** 1072 CE; fifth year of Xining  
 Shenzong Emperor, Northern Song Dynasty  
**Index: Start Date:** 1072 **End Date:** 1072  
**Materials Display:** painted scroll  
**Index: color (pigment)** [AAT 30026487]  
**Index: ink** [AAT 300015012]  
**Index: silk (silkworm material)** [AAT 300014109]  
**Index: paper (fiber product)** [AAT 300014109]



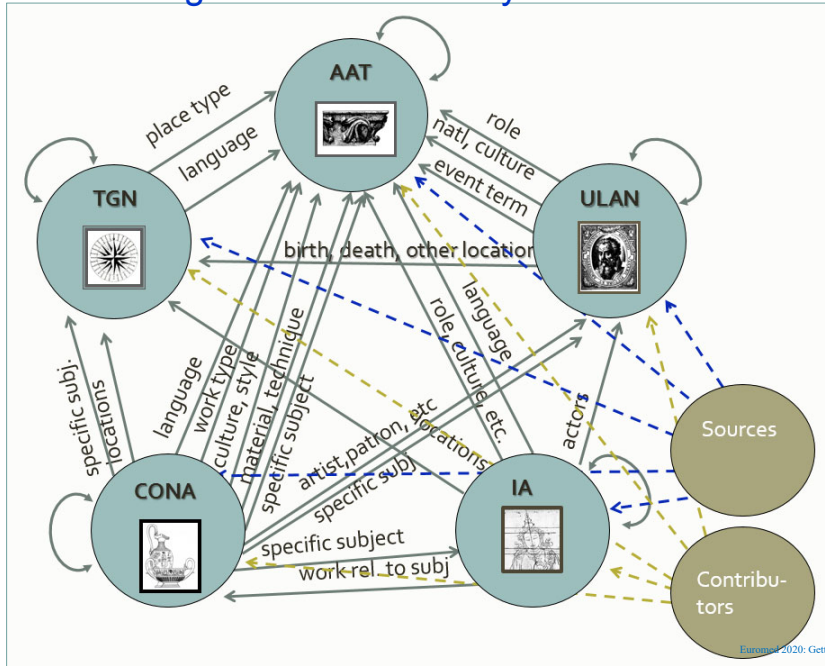
**ink** ([preferred](#), [C,U,LC,English-P,D,U,SN](#))  
 墨水 ([C,U,Chinese \(traditional\)-P,D,U,U](#))  
 油墨 ([C,U,Chinese \(traditional\),UF,U,U](#))  
 墨汁 ([C,U,Chinese \(traditional\),UF,U,U](#))  
 mò shuǐ ([C,U,Chinese \(transliterated Hanyu\)](#))  
 mǒ shuǐ ([C,U,Chinese \(transliterated Pinyin\)](#))  
 墨水 ([Chinese \(transliterated Wade-Giles\)](#))  
 inkt ([C,U,Dutch-P,D,U,U](#))  
 encre ([C,U,French-P,D,U,N](#))  
 tinta ([C,U,Spanish-P,D,U,U](#))



Euromed 2020: Getty Vocabularies

## Linking between the Getty Vocabularies

Links and relationship types within and between vocabularies were normalized and published when LOD was created



Euromed 2020: Getty Vocabularies



amfoor  
amphorae  
arc-boutant  
brittleness  
Buddhism  
calligraphy  
emulsifier  
façades  
flying buttress  
飛扶壁  
lithographer  
litógrafos  
luchtbogen  
orthogonal plan  
Macedonian  
millwork  
Rinascimento  
πυρόν  
stupa  
Sturzbecher  
travertine  
weft wrapping  
yastiks  
zeppelin  
Zigula  
zinc oxide



## What is AAT?

### AAT, the Art & Architecture Thesaurus®

The AAT is a thesaurus containing **generic terms**, dates, relationships, related to art, architecture, conservation, other cultural heritage

<https://www.getty.edu/research/tools/vocabularies/aat/index.html>  
<https://www.getty.edu/research/tools/vocabularies/guidelines/index.html#aat>

- Used for work types, roles, materials, styles, cultures, techniques, etc.
- Generic terms, not proper names
- Multilingual; large translation projects are underway
- Facets are the upper levels of the AAT structure
- AAT is not organized by subject matter or discipline

Totals as of 25 Oct 2020

| Vocab | Records | Terms   |
|-------|---------|---------|
| AAT   | 70,959  | 400,334 |

Euromed 2020: Getty Vocabularies

## Scope of AAT

### Associated Concepts

Terms for all abstract concepts and phenomena that relate to the study and execution of various areas of human thought and activity, including architecture and art in all media, as well as related disciplines. Also covered here are theoretical and critical concerns, ideologies, attitudes, and social or cultural movements

**beauty, balance, connoisseurship, metaphor, socialism**

### Physical Attributes

Terms for the perceptible or measurable characteristics of materials and artifacts as well as features of materials and artifacts that are not separable as components. Included are characteristics such as size and shape, chemical properties of materials, qualities of texture and hardness, and features such as surface ornament and

**borders, round, waterlogged, brittleness**

### Styles and Periods

The names of art and architecture styles, historical periods, and art movements. Names of peoples, cultures, individuals, and sites are included if they designate distinct styles or periods

**Yoruba, Louis XIV**

### Agents

Terms for designations of people, groups of people, and organizations identified by occupation or activity, by physical or mental characteristics, or by social role or condition

**printmakers, landscape architects, corporations, religious orders** Animals will also be included in this facet

### Activities

Terms for areas of endeavor, physical and mental actions, discrete occurrences, systematic sequences of actions, methods employed toward a certain end, and processes occurring in materials or objects. Activities may range from branches of learning and professional fields to specific life events, from mentally executed tasks to processes performed on or with materials and objects, from single physical actions to complex games

**archaeology, engineering, analyzing, contests, exhibitions, running, drawing (image-making), corrosion**

### Materials

Terms for physical substances, whether naturally or synthetically derived. These range from specific materials to types of materials designed by their function, such as colorants, and from raw materials to those that have been formed or processed into products that are used in fabricating structures or objects

**iron, clay, adhesive, emulsifier, artificial ivory, millwork**

### Objects

Terms for discrete tangible or visible things that are inanimate and produced by human endeavor; that is, that are either fabricated or given form by human activity. These range, in physical form, from built works to images and written documents. They range in purpose from utilitarian to the aesthetic. Also included are landscape features that provide the context for the built environment

**paintings, amphorae, façades, cathedrals, Brewster chairs, gardens**

### Brand Names

Names for materials, processes, and objects having names that are under trademark protection

**Agfacolor (TM) Araldite (TM) Arches paper (R)**

Euromed 2020: Getty Vocabularies





## AAT Sample Record

AAT, Art & Architecture Thesaurus®  
<http://vocab.getty.edu/page/aat/300041363>

- [partial record]
- preferred term is flagged, but not required to use it; based on local rules
- IDs for record and for terms

Getty

**ID:** 300190536

**Terms:**

steel engravings (pref, en)

[1000041363]

**Qualifier:** visual works  
 steel engraving (en)

[1000299348]

**Qualifier:** visual work

鋼版刻印 (zh) [1000551901]

gāng bǎn kè yìn (zh) [1000551903]

staaalgravures (nl) [1000482814]

gravures sur acier (fr)

[1000304335]

grabados al acero (es)

[1000429838]

Stahlstiche (de) [1000655952]

**Associative Relationships**

produced by ... steel engraving (printing process) [300190536]

**Hierarchical Relationships (poly)**

Objects Facet

... Visual and Verbal Communication (G)

... Visual Works (hierarchy name) (G)

... visual works (works) (G)

... <visual works by material or technique> (G)

... prints (visual works) (G)

... <prints by process or technique> (G)

... <prints by process: transfer method> (G)

... intaglio prints (G)

... engravings (prints) (G)

... steel engravings (visual works) (G)

**Note:** Prints made by the process of "steel engraving (printing process)," in which plates of steel or steel-faced copper are used, having replaced the use of less durable copper plates in the early 19th century

**Chinese (traditional)** 以鋼版雕刻程序製成的版畫  
**Dutch** Gravures waarbij de afbeelding is gesneden in een stalen plaat.

**German** ..... Druck, der im Verfahren des Stahlstichs hergestellt wurde.

**Spanish** ..... Estampas realizadas mediante el proceso de grabado en acero....

**Contributors:** VP,CHIN,AS,RKD,lfM-SMB-PK,CDPB-DIBAM

**Sources:** Koschatzky, Die Kunst der Graphik (1988); Lucie-Smith, Thames & Hudson Dictionary of Art Terms (1986); Newman, Innovative Printmaking (1997)

- Top of the AAT hierarchies
- .... Objects Facet
  - ..... Visual and Verbal Communication (hierarchy name)
  - ..... Visual Works (hierarchy name)
  - ..... visual works (works)
  - ..... <visual works by material or technique>
  - ..... photographs
  - ..... <photographs by technique>
  - ..... <photographs by picture-taking technique>
  - ..... aerial photographs
  - ..... chronophotographs
  - ..... instantaneous photographs
  - ..... motion photographs
  - ..... photobooth pictures
  - ..... photomicrographs
  - ..... radiographs
  - ..... beta radiographs
  - ..... x-radiographs
  - ..... snapshots
  - ..... space photographs
  - ..... staged photographs
  - ..... **stereoscopic photographs**
  - ..... anaglyphs
  - ..... half stereographs
  - ..... parallax stereograms
  - ..... stereographs
  - ..... tissue stereographs

### View of the AAT hierarchy

- Sub-facets (called "hierarchies") establish the context of the term
- Guide terms in angled brackets

**Work type:**  
 stereoscopic photograph



Getty

Euromed 2020: Getty Vocabularies

## View of the terms for a concept in AAT record

<http://vocab.getty.edu/page/aat/300162872>

AAT subject\_id **300162872**

### Terms:

**stereoscopic photographs** (preferred,C,U,English-P,D,U,PN)  
**stereoscopic photograph** (C,U,English,AD,U,SN)  
**stereoview** (C,U,English,AD,U,SN)  
**photographs, stereoscopic** (C,U,English,UF,U,N)  
**stereograms (stereoscopic photographs)** (C,U,English,UF,U,N)  
**stereo pairs** (C,U,English,UF,U,N)  
**stereophotographs** (C,U,English,UF,U,N)  
**stereo photographs** (C,U,English,UF,U,N)  
**stereos (photographs)** (C,U,English,UF,U,N)  
**stereo views** (C,U,English,UF,U,N)  
**stereoviews** (C,U,English,UF,U,N)  
**stereoscopic views** (C,U,English,UF,U,N)  
**views, stereo** (C,U,English,UF,U,N)  
**stereofoto's** (C,U,Dutch-P,D,U,U)  
**stereofoto** (C,U,Dutch,AD,U,U)  
**stereoscoopfoto** (C,U,Dutch,UF,U,U)  
**stereoscoopfoto's** (C,U,Dutch,UF,U,U)  
**stéréogramme** (C,U,French-P,AD,U,MSN)  
**coppie stereoscopiche** (C,U,Italian-P,D,U,PN)  
**fotografías estereoscópicas (obras visuales)** (C,U,Spanish-P,D,U,PN)  
**fotografía estereoscópica (obra visual)** (C,U,Spanish,AD,U,SN)

- Terms for a single item, language
- Some systems or local cataloging rules do not allow linking at the term level

### Work type:

stereoscopic photograph  
AAT term\_id 1000299214



Euromed 2020: Getty Vocabularies

## Scope of AAT

## Complying with standards and rules

Editorial rules are drawn from common practice, represent best practice

### Example: AAT Preferred terms

- Preferred term: The word or phrase used most often in authoritative sources, scholarly literature to refer to the concept in that language

**still lifes or still liVes ?**



- Preference for POS may vary
- Synonymity: All terms in one record must be exact synonyms, used interchangeably for the concept
- With allowances for parts of speech, some historical usage

Getty

**still lifes** (preferred,C,U,LC,English-P,D,U,PN)  
**still life** (C,U,English,AD,U,SN)  
**still-life** (C,U,English,AD,U,SN)  
**still lives** (C,U,English,UF,U,N)  
**still-lifes** (C,U,English,UF,U,N)  
**静物畫** (C,U,Chinese (traditional)-P,D,U,U)  
**静物** (C,U,Chinese (traditional),UF,U,U)  
**jìng wù huà** (C,U,Chinese (transliterated Hanyu)  
**jing wu hua** (C,U,Chinese (transliterated Pinyin)  
**ching wu hua** (C,U,Chinese (transliterated Wade)  
**stillevens** (C,U,Dutch-P,D,U,U)  
**stilleven** (C,U,Dutch,AD,U,PN)  
**natura morta** (C,U,Italian,UF,U,N)  
**(French-P,D,U,PN)**  
**Still-Leben (visuelles Werk)** (C,U,German,D,B)  
**Stilleben (visuelles Werk)** (C,U,German-P,AD,U,PN)  
**Stilleben** (C,U,German,UF,U,PN)  
**natura morta** (C,U,Italian-P,D,U,PN)  
**naturaleza muerta** (C,U,Spanish-P,D,U,PN)  
**naturalezas muertas** (C,U,Spanish,AD,U,PN)

Euromed 2020: Getty Vocabularies

Achilles Painter  
 Abasi, Riza  
 رضا عباسی  
 An Qi  
 安岐  
 Bartolo di Fredi  
 Galleria degli Uffizi  
 Gilbert & George  
 Katsushika Hokusai  
 Kicking Bear  
 Master of Boi  
 Méraud, Pierre-Antoine,  
 père  
 Ngapatari, Hakaraia  
 O'Keeffe, Georgia  
 Pei, I. M.  
 Rothko, Mark  
 Sa'īd, Mahmūd  
 Skidmore, Owings &  
 Merrill  
 unknown Mende  
 Vikramaditya I  
 Wren, Christopher  
 Zeuxiades  
 Ζευξιάδης

## What is ULAN?



### ULAN, the Union List of Artist Names®

ULAN contains **personal names**, relationships, biographical information for artists, architects, firms, studios, repositories, patrons, sitters, both named and anonymous

<https://www.getty.edu/research/tools/vocabularies/ulan/index.html>  
<https://www.getty.edu/research/tools/vocabularies/guidelines/index.html#ulan>

- For people and corporate bodies associated with the creation and documentation of art, architecture, and in related disciplines
- Includes current and historical associative relationships (e.g., students to teachers; firm and studios to members)

Totals as of 25 Oct 2020

| Vocab | Records  | Terms   |
|-------|----------|---------|
| ULAN  | 313, 260 | 935,147 |

Euromed 2020: Getty Vocabularies

### Scope of ULAN

#### Persons, Artists

.....Agami, Alyssa (Mexican sculptor, born 1955)  
 .....Abbate, Ercole dell' (Italian painter, 1563/1573-1613)  
 .....Abeyta, Narciso (Native American painter, 1918-1998)  
 ..... Ashmolean Master (Early Cycladic sculptor, active 25th century BCE)  
 ..... An, Yuan (Chinese architect, active 1404-1420)

#### Corporate Bodies

.....Abbate family, dell' (Modenese painters, active 16th-17th centuries)  
 .....Abbot Hall Art Gallery (British museum, contemporary)  
 .....Abdullah Freres (Turkish photography and painting studio,1858-1899)

#### Non-Artists

.....Aah-Hotep, Queen (Egyptian queen, ca. 1560- 1530 BCE)  
 .....Abelard, Peter (French theologian, philosopher, 1079-1142)  
 .....Ancaster, Mary Bertie, Duchess of (English aristocrat, died 1793)

#### Unidentified Named People and Firms

.....Abady, Sheila (artist)  
 .....Facijs, Friedrich Wilhelm (artist, born 1764)

#### Unknown People by Culture

.....unknown Abakwariga (Abakwariga cultural designation)  
 ..... unknown Abbevillian (Abbevillian cultural designation)  
 ..... unknown Aztec (Aztec cultural designation)

Getty

Euromed 2020: Getty Vocabularies





## ULAN Sample Record

ULAN, the Union List of Artist Names®

<http://vocab.getty.edu/page/ulan/500060426>

Linked to other vocabularies,  
Other resources (LOC)

**ID:** 500060426

**Names:**

Katsushika Hokusai (en,ja-trans) [1500235399]

Hokusai (en,ja-trans) [1500235408]

**Date:** name taken by the artist in 1798, and used for his prints and paintings

**Start:** 1798 **End:** 9999

葛飾 北斎 (ja) [1500705416]

Shunrō (en,ja-trans) **Date:** gō (artist's name), used in his years of training, when painting hosoban (narrow prints) [1500235400]

Sōri (en,ja-trans) **Date:** gō used in early career, named taken from his Rinpa-school master Tawaraya Sōri [1500235401]

Kakō (en,ja-trans) **Date:** used for the production of commercial prints and books [1500235402]

Tatsumasa (en,ja-trans) **Date:** used for the production of privately published illustrations [1500235403]

**Display bio:** (Japanese printmaker, painter, 1760-1849

*estimated*

**Birth date:** 1760

**Death date:** 1849

**Nationalities:**

Japanese (pref)

**Roles:**

artist  
printmaker  
painter  
designer  
calligrapher  
draftsman  
landscapist  
marine artist  
figure artist  
ukiyo-e artist

**Gender:** male

**Birth and Death Places:**

Born: Tokyo (Kanto, Japan) (inhab place)

Died: Tokyo (Kanto, Japan) (inhab place)

TGN

**Events:**

active: Tokyo (Kanto, Japan) (inhab place)

..... in Edo, modern-day Tokyo

**Associative Relationships:**

teacher of Taito, Katsushika, II

.....(Japanese printmaker, active ca. 1820-1850)

child of Nakajima Ise

.....(Japanese mirror maker, 18<sup>th</sup> century)

possibly identified with ... Tōshūsai Sharaku

..... (Japanese printmaker, active 1794-1795)

**Contributors:**

VP, Avery, GRL, BHA, CCA

**Sources:** Bowie, Drawings of Hokusai (1964); Grove Dictionary of Art online (1999-2002); Library of Congress Authorities n 80043599 ; Metropolitan Museum of Art [online] (2003-); Bouquillard, Hokusai: First Manga Master (2007)

Euromed 2020: Getty Vocabularies

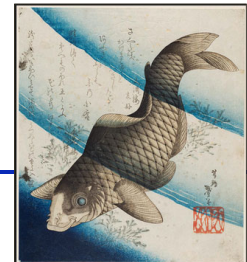
### Scope of ULAN

#### Rich data and relationships

- E.g., ULAN, reciprocal relationships teacher/student  
1101 person – **teacher of** – person  
1102 person – **student of** – person

Japanese printmaker *Katsushika Hokusai* [was] **teacher of** *Katsushika Taito II*

- As with other relationships in vocabulary records, the relationship may be circumscribed with dates



**ID:** 500060426

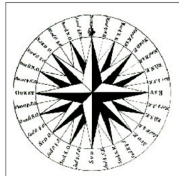
**Page Link:** <http://vocab.getty.edu/page/ulan/500060426>

**Katsushika Hokusai** (Japanese printmaker and painter, 1760-1849)

| Relationship Type | Record Type | Name                  | Display Date         | Start | End  |
|-------------------|-------------|-----------------------|----------------------|-------|------|
| 1101 - teacher of | Person      | Taito, Katsushika, II | ca. 1820-before 1830 | 1819  | 1830 |
| 1102 - student of | Person      | Shunshō, Katsukawa    | ca. 1778-1793        | 1777  | 1793 |

Abthugni  
 Angel Falls  
 Athínaí  
 Αθήναι  
 Bhārat  
 Býći Skála  
 Bora-Bora  
 Casablanca  
 Chichén Itzá  
 Cueva Cerro Sota  
 Donner Pass  
 Dos Cabezas Site  
 Firenze  
 Fort Rouillé  
 Gdansk  
 Genna Bogai, Arcu  
 Святой Престол  
 Jabal Mayyah  
 Kush  
 Luxor  
 מִישְׂרָאֵל  
 Mare Cantabricum  
 Nan Madol Ruins  
 Rapa Nui  
 臺北

## What is TGN?



### TGN, Getty Thesaurus of Geographic Names®

TGN contains **place names** relevant to art, architecture, and related disciplines

<https://www.getty.edu/research/tools/vocabularies/tgn/index.html>

<https://www.getty.edu/research/tools/vocabularies/guidelines/index.html#tgn>

- Names, relationships, place types, dates, notes, coordinates
- Scope includes cities, nations, empires, physical features
- Focus on historical, regions, archaeological sites, lost settlements
- Built upon a skeleton of the modern world, but only as much as needed for historical information and cataloging art; not comprehensive
- TGN is a thesaurus compliant with ISO standards
- TGN is not GIS, but may be linked to GIS, maps, etc.
- Co-references other geographic resources

Totals as of 25 Oct 2020

| Vocab | Records   | Terms     |
|-------|-----------|-----------|
| TGN   | 2,532,907 | 4,088,303 |

Euromed 2020: Getty Vocabularies

## Scope of TGN

### World

....Africa (continent)  
 .....Abyssinia (historical) (general region)  
 ....Aden, Gulf of  
 ....Ethiopia (nation)  
 .....Tigray (state)  
 .....Āksum (inhabited place)  
 ....Gonja Kingdom (former nation/state/empire)

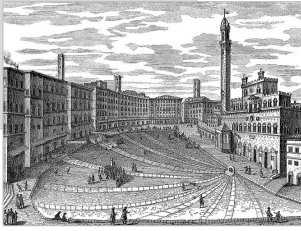
### Extraterrestrial Places

....Milky Way Galaxy (galaxy)  
 .....Solar System (planetary system)  
 .....Jupiter (planet)  
 .....Metis (moon)

- Historical and current world, administrative and physical features in same hierarchy
- Small number of Extraterrestrial Places, as needed by contributors

Getty

Euromed 2020: Getty Vocabularies



## TGN Sample Record

TGN, Getty Thesaurus of Geographic Names®

<http://vocab.getty.edu/page/tgn/7011179>

Linked to other vocabularies,  
Other resources (LOC, NGA)

**ID:** 7011179

**Names:**

Siena (pref,it,en) [47413]  
 Sienna [140808]  
 Sienne (fr) [1002860953]  
 Σιένα (el) [1002038443]  
 锡耶纳 (zh) [1002038446]  
 Сиена (ru) [1002038445]  
 シエーナ (ja) [1002038441]  
 Sienese (adj) (en) [1159549]  
 Senae (hist.) [181416]  
**Date:** Medieval  
**Start:** 800 **End:** 1500  
 Sena Julia (hist.) (la) [181415]  
 Sena (hist.) [181414] **Date:** Etruscan

**Hierarchical Relationships (poly.)**

World (facet)  
 .. Europe (continent)  
 ... Italy (nation)  
 .... Tuscany (region)  
 ..... Siena (province)  
 ..... Siena (inhabited place)

World (facet)  
 .. Europe (continent)  
 ... Italian Peninsula (peninsula)  
 .... Etruria (former confederation)  
 ..... Siena (inhabited place)  
 Historical: Late Etruscan

**Associative Relationships**

ally of Pisa ..(inhabited place) [7006082]  
 Ghibelline allies, 13th-14th centuries

**Contributors:**

VP,BHA, Avery,GRI

**Sources:** Annuario Generale (1980); NGA/NIMA database (2003-) -129709; Library of Congress Authorities n 79013822; UNESCO World Heritage Centre [online] (1992-); VIAF: Virtual International Authority File [online] (2009-) VIAF ID: 239842096 (Geographic)

**Place Types**

inhabited place  
**Date:** settled by Etruscans (flourished 6th century BCE)

city  
 archiepiscopal see AAT  
 commune (administrative)

**Date:** since 1125  
 cultural center  
 university center  
 world heritage site

**Lat:** 43 19 07 N (43.3180)  
**Long:** 011 19 50 E (11.3300)  
**Elevation:** 1056.430 feet (322.0000 meters)

**Note:** Siena was founded as an Etruscan hill town; later was the Roman city of Sena Julia (3rd century BCE). It flourished under the Lombard kings (6th century CE) and was Medieval self-governing commune ...

Euromed 2020: Getty Vocabularies

Adorazione dei Magi  
 Apedemak  
 Baby Jaguar  
 Death and the Miser  
 Ehecatl  
 Ganesh  
 Hades  
 Hercules  
 Herakles  
 Mithras  
 Niflheim  
 Noli me tangere  
 Olouaipilele  
 Prajnaparamita  
 Penance of Indra  
 Reclining Buddha  
 Bouddha couché  
 涅槃仏  
 Storming the Bastille  
 The Divine Comedy  
 Tumatauenga  
 Virgin Hodegetria  
 World War I  
 Xibalba

## What is IA?



## IA, the Getty Iconography Authority™

IA contains **iconography names** describing topics relevant to art, architecture, and related disciplines

<https://www.getty.edu/research/tools/vocabularies/cona/index.html>

<https://www.getty.edu/research/tools/vocabularies/guidelines/index.html#ia>

- Includes the proper names of subjects not covered by other Getty Vocabularies
- Scope is multicultural and multilingual, grows through contributions
- Includes links to other sources where there is overlap, such as Iconclass and US Library of Congress subject authorities
- The IA is compliant with the Subject Authority of CDWA and CCO (*Categories for the description of Works of Art and Cataloging Cultural Objects*)
- The IA has a thesaural structure; it includes equivalence, associative, and hierarchical relationships
- The IA is linked to the other Getty Vocabularies

Totals as of 25 Oct 2020

| Vocab | Records | Terms |
|-------|---------|-------|
| IA    | 1,968   | 5,527 |

Euromed 2020: Getty Vocabularies



## Scope of IA

### Religion, Mythology, Legend

- ....Buddhist Iconography
- .....Buddhist allegory, symbolism, theme
- .....Buddhist characters
- .....Buddhist legendary places
- .....Buddhist narratives
- .....Four Encounters (Buddhist narrative)

### Literature and Performing Arts

- ....Literary characters
- .....Beatrice (Italian literary character, Dante, ca. 1293)

### Named Events

- ....Ancient history (Egyptian, Greek, Roman, other western)
- .....Battle of Salamis (Greek history, 480 BCE)

### Miscellaneous Topics

- ....Miscellaneous Legendary Places
- .....Cockaigne (legendary place, medieval western)

Getty

Euromed 2020: Getty Vocabularies

## IA Sample Record



Names in multiple languages

Users may choose the name appropriate for their needs

Getty

IA, the Getty Iconography Authority™

<http://vocab.getty.edu/page/ia/901000085>

**ID** 901000085

#### Names

- Avalokiteśvara (en) [5000191]
- Avalokitesvara [5001067]
- Avalokitesvara [5003150]
- अवलोकितेश्वर (sa) [5001068]
- ཐུན་རས་གཟིགས (bo) [5002308]
- Spyan ras gzigs [5002309]

#### Hierarchical Relationships

- Top of the IA hierarchies
- Legend, Religion, Mythology
- Buddhist iconography
- Buddhist characters
- Avalokitesvara (Buddhist iconography)

#### AAT links

- role/characteristic is ... bodhisattva
- symbolic attribute is ... lotus
- culture/religion is ... Mahayana (Buddhism)
- culture/religion is ... Theravada (Buddhism)

#### Associative Relationships

- associated with .... Krishna (Hindu iconography)
- counterpart is .... Guanyin (Buddhist iconography)

**Note** The bodhisattva of infinite compassion and mercy; embodies the compassion of all Buddhas. This bodhisattva is portrayed in different cultures as either female or male...

**Contributors** VP, BHA

**Sources** Bowker, Oxford Dictionary of World Religions (1997); Huntington, Art of Ancient India (1985); Encyclopedia Britannica Online (2002-);

**LC:** LC control no.: sh 85010492

AAT  
TGN  
ULAN  
CONA

Euromed 2020: Getty Vocabularies

Bhimesvara Temple  
 Bradshaw rock  
 paintings  
 Case Study House 21  
 Château de Versailles  
 Empire State Building  
 En liberté comme toi  
 Himeji Castle  
 姫路城  
 Irises  
 Kashmir Gate  
 Mona Lisa  
 La Gioconda  
 Model for the Façade  
 of San Lorenzo  
 MS Ludwig XV  
 Pantheon  
 Portrait of Napoleon  
 Ronda di notte  
 Square Ting Vessel  
 of Duke Kang  
 西周早期 康侯方鼎



## What is CONA?

CONA, Cultural Objects Name Authority®

CONA compiles **titles/names** with other metadata for works of art, architecture, and other cultural works

<https://www.getty.edu/research/tools/vocabularies/cona/index.html>

<https://www.getty.edu/research/tools/vocabularies/guidelines/index.html#cona>

- For works current and historical, documented as items or in groups, whether extant, destroyed, or never built
- May be used to record works depicted in visual surrogates, architecture, multiples (prints), and for other purposes

Totals as of 25 Oct 2020

| Vocab | Records | Terms  |
|-------|---------|--------|
| CONA  | 6,763   | 13,431 |

Euromed 2020: Getty Vocabularies

## Scope of CONA

### Built Works

*Abbotsford House* (country house; designed by William Atkinson, (British architect, ca. 1773-1...; constructed 1817-1819, 1822-1825; Melrose (Scottish Borders, Scotland, UK)...

*Attagudi (Siva temple)* (temple (building); patron: Ganapatideva; unknown Telingana; first quarter of 13th century, Chandravalli (Karnātaka, India) ...)

### Movable Works

*Abraham Lincoln and His Second Son Thomas (Tad)* (albumen print; Alexander Gardner (American, born Scotland, 1821 - 1882) (Am...; April 9, 1865; J. Paul Getty Museum at the Getty Center (Los Angeles, Los A...; 85.XM.285)

*Boy with a Dragon* (sculpture (visual works); Gian Lorenzo Bernini (Italian, 1598 - 1680); about 1617; J. Paul Getty Museum at the Getty Center (Los Angeles, Los A...; 87.SA.42)

### Visual Surrogates

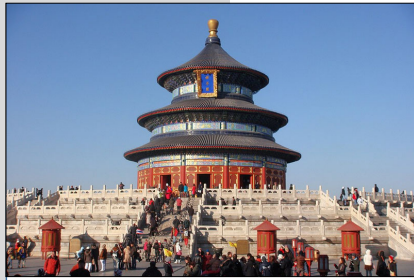
*Foto arte minore / Max Hutzel* (collection (object grouping)); photographers: Max Hutzel and Roberto Sigismondi; 1960-1990); Getty Research Institute (Los Angeles...

### Conceptual Works

*Adam and Eve* (multiples); engraving (print); Albrecht Dürer (German painter, printmaker, 1471-1528); 1504; (Conceptual Works)

Getty

Euromed 2020: Getty Vocabularies



## CONA Sample Record

- Multiple contributors
- Co-reference multiple IDs for the same work

### CONA, Cultural Objects Name Authority®

<http://vocab.getty.edu/page/cona/700000141>

**CONA ID:** 700002923

#### Titles/Names:

Temple of Heaven (en) [1000016889]  
 Tian Tan (zh-tr) [1000016890]  
 T'ien-t'an (zh-trl) [1000019041]  
 Tiantan [1000016892]  
 Temple du Ciel (fr) [1000019264]  
 Templo del Cielo (es) [1000019265]  
 Himmelstempel (de) [1000019266]  
 天壇 (zh) [1000016894]  
 天坛 (zh) [1000016893]  
 천단 (ko) [1000019043]

Getty

**Catalog Level:** item

**Work Types:**  
 building complex  
 temple

AAT

**Classification:**  
 architecture

**Creator Display:**

first built by Ming Chengzu (1360-1424); extended by Ming Shizong (1507-1567); renovated by Qianlong (1711-1799)

ULAN

[ULAN 500356295]  
 Role: patron/38121  
 [ULAN 500372663]  
 Role: patron/38121  
 [ULAN 500372572]  
 Role: patron/38121

**Locations:**

Location current Beijing (Beijing Shi (municipality), (nation) Address Note: 39°57'05"N 116°24'36"E

TGN

**Dimensions** [display] entire complex: 237 hecatres  
**Mat & Tech** [display] wood and stone  
 wood AAT 300011914 | stone AAT 300011176

AAT

**Style:** Chinese [AAT 300018322] | Taoist [AAT 300143666]

**General Subject:**

architecture **Type:** isness  
 religion and mythology **Extent:** purpose

**Specific Subjects:**

Heaven [AAT 300185658] **Extent:** dedication  
 Chinese heaven [IA 901002236]

**Contributors:**

JPGM VP GRISC BHA BWR

**Sources:** Built Works Registry **BWR3792244**; Library of Congress Authorities online (2002-) **n2011019454**; Fodor's Travel (2016); J. Paul Getty Museum, collections online (2000-); Great Buildings Online (1997-); UNESCO World Heritage Centre [online] (1992-) **Ref: 881**

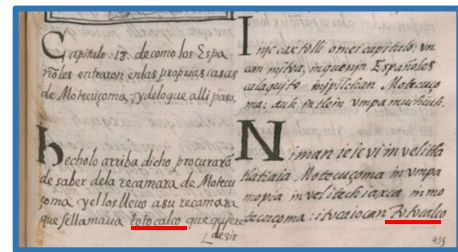
AAT  
 TGN  
 ULAN  
 CONA  
 CONA IA

## Scope of CONA

### Recording information about lost works

- Work was documented in contemporary sources, is now lost

**CONA ID** 700009685 **Class:** architecture  
**Work Type:** storehouse **Work Type:** destroyed work  
**Title:** Totocalco **Title:** Totocalli  
**Creator:** unknown Aztec; under Montezuma II  
**Dimensions:** unavailable **Materials:** masonry construction  
**Current Location:** Mexico City (Mexico) 19 26 06 N, 99 07 53 W  
**Location:** Sacred Precinct (Tenochtitlan, Mexico) Type: former  
**Date:** 15th century  
**Related Work:** distinguished from Totocalco (aviary)  
**General Subject:** architecture **Type:** isness  
**Note:** Storehouse in 16th-century Tenochtitlan (now Mexico City). Totocalco and Totocalli were terms used interchangeably in different sources to refer to one of two places, the first was a storehouse to the east of the main temple precinct where Mexica precious goods were kept, while the other was housed birds of the realm.  
**Contributors:** FloCo VP  
**Sources:** GRI, FloCo terminology (2019-); Sahagún, Historia general (1989) v3:1189; Simeón, Diccionario nahuatl (1992) v13:49



Florentine Codex, Book 12, Ch 18, Folio 28 recto, 1577



Tenochtitlan, map published in Nuremberg in 1524

Euromed 2020: Getty Vocabularies

Getty

What is the Florentine Codex Initiative?

<https://blogs.getty.edu/iris/who-writes-history-competing-narratives-about-the-conquest-of-mexico-and-the-fall-of-the-aztec-empire/>

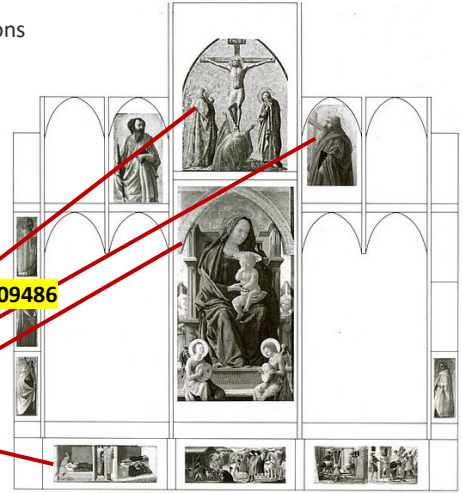


## Scope of CONA

### Recording information about lost works

- Reconstructed disassembled, components works held in different repositories or locations
- Common with manuscripts, paintings, sculpture, architecture
- May be varying opinions on reconstructions

### Proposed reconstruction of Pisa Altarpiece, Masaccio



CONA ID 700009486 Proposed reconstruction of fragments of Masaccio's Pisan altarpiece (after C. Gardner von Teuffel 1977).

#### CONA

+ Movable Works (facet (controlled vocabulary); N/A; N/A) 700000002  
 + Movable Works by class: drawings, paintings, prints, other tw 700009486  
**Pisa Altarpiece (disassembled work; Masaccio (Italian paint 700009486**  
 Adoration of the Magi [N] (paintings, panel (paintings by f 700009691  
 Martyrdoms of St Peter and St Paul [N] (paintings, panel 700009690  
 Saint Andrew [N] (painting (visual work), Masaccio (Florent 700002117  
 Saint Paul [N] (paintings, panel (paintings by form); Mas 700009694  
 St Julian and St Nicholas [N] (paintings, panel (paintings 700009692  
 The Crucifixion [N] (paintings, panel (paintings by form); 700009693  
 Virgin and Child [N] (paintings, panel (paintings by form); 700009689

Getty

## Scope of CONA

### Linking to works depicted in other works

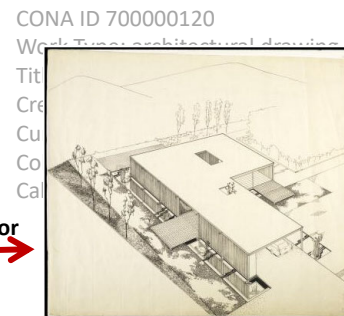


- House is depicted in a drawing by the architect and a photograph by Julius Shulman
- Also for linking **visual surrogates** to the works depicted

#### CONA record for the house

**CONA ID** 700000090  
**Classification** architecture  
**Work Type:** house  
**Title:** Case Study House No. 21  
**Title:** Bailey House Title: CSH #21  
**Creator:** architect: Pierre Koenig  
**Creation Date:** 1956-1958; renovated 1998  
**Dimensions:** 1 story, 1320 square feet, 4 rooms and 2 baths, on a 110 x 160 foot lot  
**Mat & Tech:** steel frame and flat roof deck  
**Current Location:** Los Angeles (California, USA) **Address Note:** 34.116634 -118.391623; 038 Wonderland Park Avenue, Hollywood Hills, Los Angeles, 90046

preparatory for  
based on



depicts  
depicted in



Euromed 2020: Getty Vocabularies

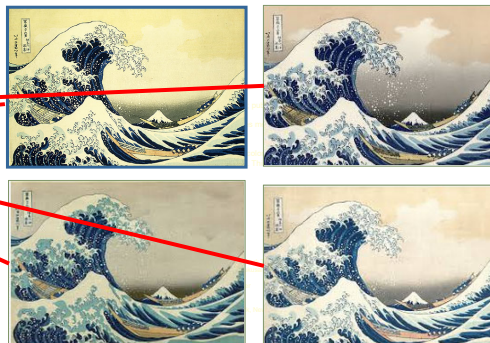
Getty

## Scope of CONA

### Conceptual works, multiples, series of works



|   |
|---|
| ..... Thirty-six Views of Mount Fuji: <b>Series</b> |
| ..... Great Wave off Kanagawa (multiple)            |
| ..... L'arc de la vague au large de Kanagawa [N]    |
| ..... The Great Wave [N]                            |
| ..... The Great Wave off Kanagawa [N]               |
| ..... The Great Wave off Kanagawa [N]               |
| ..... Under the Wave off Kanagawa [N]               |
| ..... Under the Wave off Kanagawa [N]               |
| ..... Under the Wave off Kanagawa [N]               |
| ..... Under the Wave off Kanagawa [N]               |



Unique physical item  
→  
conceptual record for print  
→  
a series

Getty

Euromed 2020: Getty Vocabularies



Getty

## Getty Vocabularies: The Community

- Target audiences are researchers, art museums, special collections, art libraries, and archaeological and conservation projects, although other audiences are frequent users as well
- Developers and information providers
- The researchers themselves are also now users

### Contributors to the Getty Vocabularies

- Institutions that catalog or index art, architecture, related disciplines; translation consortia

### Users of the Getty Vocabularies

- Catalogers, researchers, vendors (e.g., TMS)
- Examples of users include Europeana, CHIN, American Art Collaborative (AAC), Linked.Art
- Through links or contributions to other resources, e.g., VIAF (Virtual International Authority File)

Euromed 2020: Getty Vocabularies

## Contributors to the Getty Vocabularies

<https://www.getty.edu/research/tools/vocabularies/contribute.html>



### Contribute to the Getty Vocabularies

The Getty vocabularies are compiled resources that grow through contributions from Getty projects and other institutions. Contributors to the Getty vocabularies include museums, libraries, archives, special collections, visual resources collections, bibliographic and other documentation projects, and large translation projects.

- Contributors agree to conditions via online click through
- Proposed contribution is reviewed by governance groups, accepted
- Send sample data, send full data contribution in bulk
- Processed and loaded by Getty
- Published in various formats monthly

Getty

Euromed 2020: Getty Vocabularies

### Who are the contributors?

- Getty projects
- Over 300 institutions, consortia, research projects

### How is the data generated?

- Contrib. may research and create original data for the purpose of contribution  
E.g., translations: Spanish, Dutch, Chinese, German, French, Croatian, Portuguese, Japanese
- Or may map data already collected in the course of their own work  
E.g., repositories and documentation projects, research projects
- Contributions = 10s of thousands per year

### Examples of Contributors to Vocabularies

|   |                   |      |  |
|---|-------------------|------|--|
| Provenance Index  | GRI Photo Archive | GCI  | Getty                                      |
| GRI Special Collections                                       | GRI Library       | JPGM |  |
| Netherlands Institute for Art History (RKD)                   |                   |      | National documentation agencies, consortia |
| Academia Sinica of Taiwan                                     |                   |      |  |
| Canadian Heritage Information Network                         |                   |      |  |
| Belgian Initiative to Broaden the Network for the French Text |                   |      |  |
| Collaborative Vocabulary of Arts and Architecture, Brazil     |                   |      |  |
| Staatliche Museen zu Berlin Preussischer Kulturbesitz         |                   |      | Image collections, libraries               |
| Centro de Documentación de Bienes Patrimoniales, Santiago     |                   |      |  |
| Tokyo National Research Institute for Cultural Properties     |                   |      |  |
| Built Works Registry  |                   |      |  |
| Istituto Centrale per il Catalogo e la Documentazione, Rome   |                   |      | Art repositories                           |
| Courtauld Institute   |                   |      |  |
| Canadian Centre for Architecture (CCA)                        |                   |      |  |
| Avery Architectural & Fine Arts Library                       |                   |      | Publishers                                 |
| Frick Art Reference Library                                   |                   |      |  |
| Indiana University Digital Collections                        |                   |      | Research projects                          |
| Österreichische Galerie Belvedere                             |                   |      |  |
| Bunting Visual Resources Library, U. of New Mexico            |                   |      | Publishers                                 |
| Pinacoteca do Estado de São Paulo                             |                   |      |  |
| Rijksmuseum in Amsterdam                                      |                   |      | Research projects                          |
| Israel Museum, Jerusalem                                      |                   |      |  |
| Smithsonian National Museum of African Art                    |                   |      | Publishers                                 |
| Grove Art online  |                   |      |  |
| Florentine Codex Initiative (GRI)                             |                   |      | Research projects                          |
| Traditional Chinese Architecture (Vanderbilt, SEU)            |                   |      |  |

Getty



## Contributors to the Getty Vocabularies

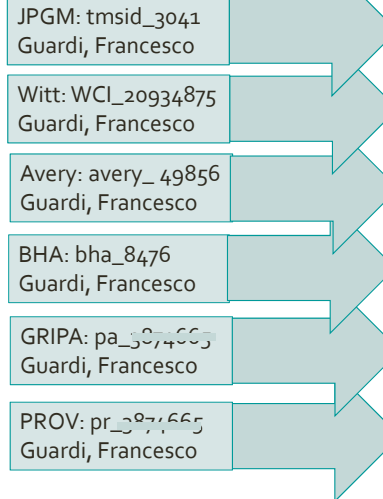


detail of portrait, by Pietro Longhi, in Ca' Rezzonico, Venice

- Compiled resources = multiple contributors, separate records for same entity
- Published as unified records for end users
- Rather than clustering, Getty vocabularies merge the data into a homogenous whole
- The attribution to the contributor and sources are retained

LINK back to contributed data

### Getty vocabularies merge contributed records



### ULAN\_500017409

#### Names:

Guardi, Francesco  
Francesco Guardi  
Gardi, Francesco  
Garde, Francesco  
Gardis, Francesco  
François Guardi

#### Nationalities:

Italian  
Venetian

#### Roles:

artist  
painter  
landscapist

[Links to images](#)



Getty

## Users of the Getty Vocabularies

- Online usage
- Vocabularies are always among top resources accessed at GRI

### Top 15 GRI-wide page views per month

| No. | Page  | Views  |
|-----|---|--------|
| 1   | <a href="#">Vocabs: AAT</a>                             | 16,106 |
| 2   | <a href="#">Vocabs: ULAN</a>                            | 11,826 |
| 3   | <a href="#">Vocabs: TGN</a>                             | 9,479  |
| 4   | <a href="#">GRI landing page</a>                        | 5,676  |
| 5   | <a href="#">GRI list of resources</a>                   | 5,171  |
| 6   | <a href="#">Exhibition: monumentality</a>               | 4,273  |
| 7   | <a href="#">Vocabs: general information</a>             | 4,245  |
| 8   | <a href="#">Provenance: search</a>                      | 3,895  |
| 9   | <a href="#">Library</a>                                 | 3,345  |
| 10  | <a href="#">Provenance: general information</a>         | 2,690  |
| 11  | <a href="#">BHA (Bibliography for History of Art)</a>   | 2,091  |
| 12  | <a href="#">Photo Archive</a>                           | 1,759  |
| 13  | <a href="#">GRI: Digital Collections: Turkey photos</a> | 1,673  |
| 14  | <a href="#">Vocabs: CONA</a>                            | 1,489  |
| 15  | <a href="#">Vocabs: CDWA (cataloging rules for art)</a> | 1,143  |

Getty

scabularies

## Users of the Getty Vocabularies

| Month        | Unique visitors | Number of visits | Pages             | Hits              | Bandwidth        |
|--------------|-----------------|------------------|-------------------|-------------------|------------------|
| Jan 2020     | 5,838           | 23,282           | 7,079,022         | 7,258,638         | 158.21 GB        |
| Feb 2020     | 4,832           | 70,284           | 3,485,623         | 3,662,727         | 98.46 GB         |
| Mar 2020     | 5,850           | 76,705           | 3,807,539         | 3,965,035         | 76.42 GB         |
| Apr 2020     | 5,870           | 48,994           | 4,220,451         | 4,395,790         | 98.85 GB         |
| May 2020     | 5,506           | 61,111           | 8,432,795         | 8,623,338         | 123.66 GB        |
| Jun 2020     | 4,946           | 83,586           | 7,926,110         | 8,072,675         | 127.28 GB        |
| Jul 2020     | 6,409           | 50,648           | 6,408,614         | 6,555,148         | 161.38 GB        |
| Aug 2020     | 5,077           | 55,552           | 5,938,987         | 6,065,860         | 117.42 GB        |
| Sep 2020     | 0               | 0                | 0                 | 0                 | 0                |
| Oct 2020     | 0               | 0                | 0                 | 0                 | 0                |
| Nov 2020     | 0               | 0                | 0                 | 0                 | 0                |
| Dec 2020     | 0               | 0                | 0                 | 0                 | 0                |
| <b>Total</b> | <b>44,328</b>   | <b>470,162</b>   | <b>47,299,141</b> | <b>48,599,211</b> | <b>961.69 GB</b> |

*\*Not including robots, worms, or replies with special http address*

- Data release files also have high numbers of users
- Relational Tables, XML, APIs
- Example illustrates LOD with very high use for one month
- AAT is also available at satellite sites in Germany, Taiwan, Chile, the Netherlands
- Vocabularies are available in various vendor systems

Euromed 2020: Getty Vocabularies



## Getty Vocabularies: The Future

- Continued contributions focusing on our core mission
- Multilingual, multicultural, inclusive, Ancient Worlds Now
- Make public criteria for contributions, targeted vs opportunistic
- Establish clear guidelines, more pre-processing by contributors
- Methods to aid contributors, training, tools (e.g., OpenRefine, workshops, tutorials)
- Co-referencing of overlapping, similar resources; multiple IDs
- Publication is Open and Free of charge (LOD, and all formats); relational tables and XML may be discontinued
- Formats for export and integration in other resources
  - Advanced and useful to emerging technology
  - Hope to not exclude users who are not wealthy, elite technical support

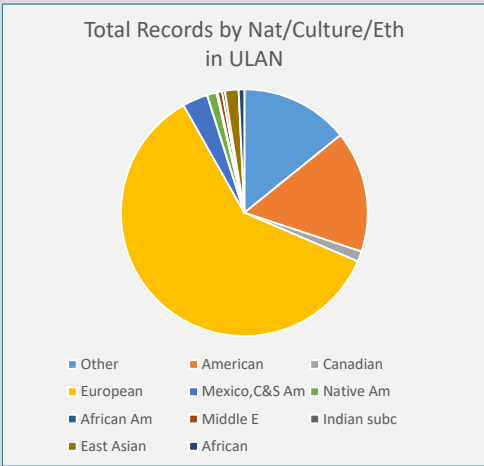
Euromed 2020: Getty Vocabularies

**Goals: Increased multilingual, multicultural, inclusive Vocabularies**

Status: Current ULAN is heavily European, but our goal is to add more non-Western

**Nat./Cultures in ULAN:**  
 Records total: 313,260  
 Nat/cultures total linked: 351,773  
*[a person may have multiple nationalities, cultures]*

**Partial list of Nationality/Culture/Ethnicity**  
 European 212,286  
 American 55,933  
 African American 517  
 Native American, First Nations 4,394  
 Middle Eastern 12,006  
 Mexican, Central-South 11,652  
 African 2,588  
 Indian subcontinent 1,370  
 East Asian 6,270  
 Canadian 4,812  
 Other 49,945



Euromed 2020: Getty Vocabularies

**Goals: Increased multilingual, multicultural, inclusive Vocabularies**

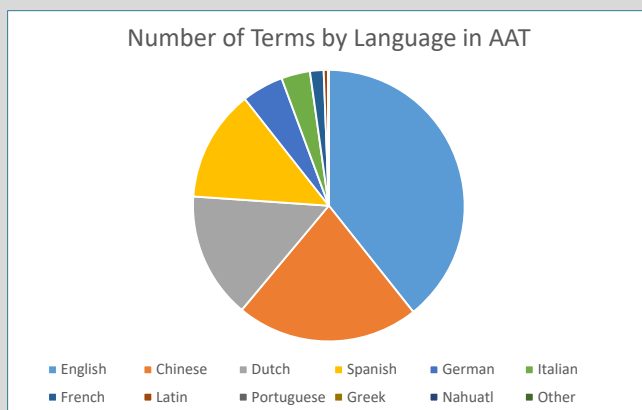
Status: Current AAT is in process of receiving several translations and to become increasingly multilingual

**Languages in AAT**

136 different languages

No of terms for top 20 languages

English 165,905  
 Chinese 95,000  
 Dutch 63,336  
 Spanish 56,188  
 German 20,959  
 French 15,000  
 Italian 14,444  
 Latin 2,141  
 Hebrew 2,000  
 Portuguese 247  
 Greek 70  
 Nahuatl 49  
 etc.



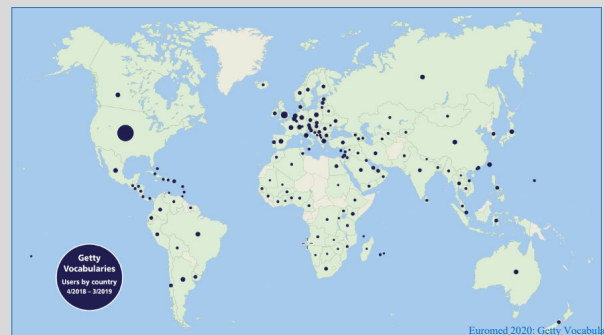
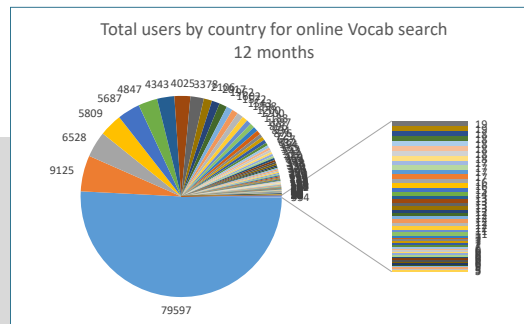
Euromed 2020: Getty Vocabularies

## Increasing usage around globe

### Distribution of users, Vocab online search

149 countries total; top 50 in a year

|                |       |                |     |
|----------------|-------|----------------|-----|
| United States  | 79597 | Colombia       | 612 |
| United Kingdom | 9125  | New Zealand    | 594 |
| Canada         | 6528  | South Korea    | 565 |
| Germany        | 5809  | Portugal       | 553 |
| France         | 5687  | Sweden         | 542 |
| Italy          | 4847  | Czech Republic | 522 |
| Spain          | 4343  | Ireland        | 480 |
| Netherlands    | 4025  | Ukraine        | 468 |
| Australia      | 3378  | Hungary        | 443 |
| Belgium        | 2106  | Slovakia       | 348 |
| Poland         | 2017  | Turkey         | 348 |
| Switzerland    | 1962  | Chile          | 336 |
| Russia         | 1602  | Indonesia      | 330 |
| Japan          | 1572  | Denmark        | 324 |
| Mexico         | 1543  | Croatia        | 306 |
| Brazil         | 1398  | Finland        | 300 |
| China          | 1200  | Norway         | 294 |
| Greece         | 1200  | Singapore      | 283 |
| Argentina      | 1188  | Puerto Rico    | 270 |
| Taiwan         | 1087  | Egypt          | 246 |
| Israel         | 896   | Bulgaria       | 234 |
| Austria        | 894   | unidentified   | 222 |
| India          | 876   | South Africa   | 215 |
| Hong Kong      | 721   | Thailand       | 193 |
| Philippines    | 667   | Saudi Arabia   | 168 |



Getty

<https://www.getty.edu/research/tools/vocabularies/obtain/openrefine.html>

## The Getty Research Institute

Special Collections Library Search Tools & Databases Scholars & Projects Publica

### Getty Vocabularies OpenRefine Reconciliation

Data managers, developers  
Vocabularies may now do s  
transformation.

- Experienced users of th
- Detailed instructions fo

**Note:** The tutorial doc  
users.

Tool for working with messy  
data: cleaning it; transforming  
it from one format into  
another; and extending it with  
web services and external data

Getty

/vocabularies



127.0.0.1:3333/project?project=2033714457201

**OpenRefine** Artists Names.xlsx Permalink

Open... Export Help

Filter / Filter Undo / Redo 3 / 3 **40254 rows** Extensions: Wikidata

Show as: rows records Show: 5 10 25 50 rows « first < previous 1 - 50 next > last

ARTIST NAME ARTISTBIRTH ARTISTDEATH ARTISTNATION ARTISTGENDER

1. Tamburini

Tamburini, Arnaldo (27)  
 Tamburini, Giovanni Maria  
 Tamburini, Francisco (17)  
 Tamburini, Aronne (16)  
 Tamburini, Arnaldo, Jr. (4)  
 Tamburini, Gabriele (16)  
 Tamburini, Dalmazo, Jose  
 Tamburini, Giovanni Agostino  
 Tamburini, Giovanni Agostino  
 Create new item

Match this Cell Match All Identical Cells Cancel

**Tamburini, Arnaldo**  
(Italian painter, count, 1843-1901)

Comment on works: genre, Portraits

2. F.A. Bridgman

Bridgman, Frederick Arthur  
 Bridgman, G. (17)  
 Bridgman, David (16)  
 Bridgman, Henry (16)  
 Bridgman, George Brant  
 Turner, F.A. (14)  
 Bridgman, Charles J. (14)  
 Porsche, Ferdinand Alexander (11)  
 Wolff, Friedrich Anton (10)  
 Benedict, Fred (9)  
 Clark, Frederick Ambrose (9)

Artists Names.xlsx...html 36/38 B, 0 secs left

Show all

Getty

Euromed 2020: Getty Vocabularies

## Linking the Getty Vocabularies

Improving interconnectivity:  
Linking Getty Vocabularies to other resources

Getty

Euromed 2020: Getty Vocabularies

**Thank you.**

Patricia Harpring  
Managing Editor  
Getty Vocabulary Program

[pharpring@getty.edu](mailto:pharpring@getty.edu)  
[vocab@getty.edu](mailto:vocab@getty.edu)

Getty

Euromed 2020: Getty Vocabularies